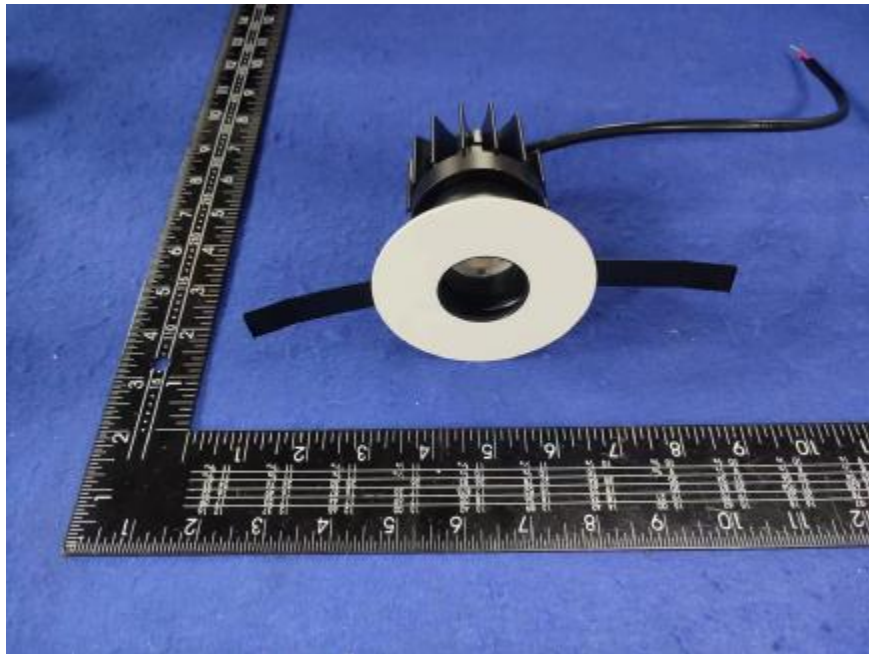


### Luminaire Photograph



Light Output Ratio:	53.9%	
Luminaire Power:	10.13 W	
SHR Nominal:	0.00	Calculated using the TM5
SHR Maximum:	0.30	fine grid method.

C Range: 0 - 360DEG  
C Interval: 30.0DEG  
Test Speed: HIGH  
Temperature: 25.3 °C  
Operators: zoe  
Test Date: 2024-5-23

γ Range: 0 - 180DEG  
γ Interval: 1.0DEG  
Test System: EVERFINE GO-SPEX500\_V1 SYSTEM V2.00.461  
Humidity: 65.0%  
Test Distance: 3.160m [K=1.0000]  
Remarks: LAMP: BXRE-30G10TH-A-83 Ra:90  
LENS: PM-1082-WH 15R  
NO DRIVER: 300mA  
30minutes warm-up

## LUMINOUS INTENSITY DISTRIBUTION DIAGRAM

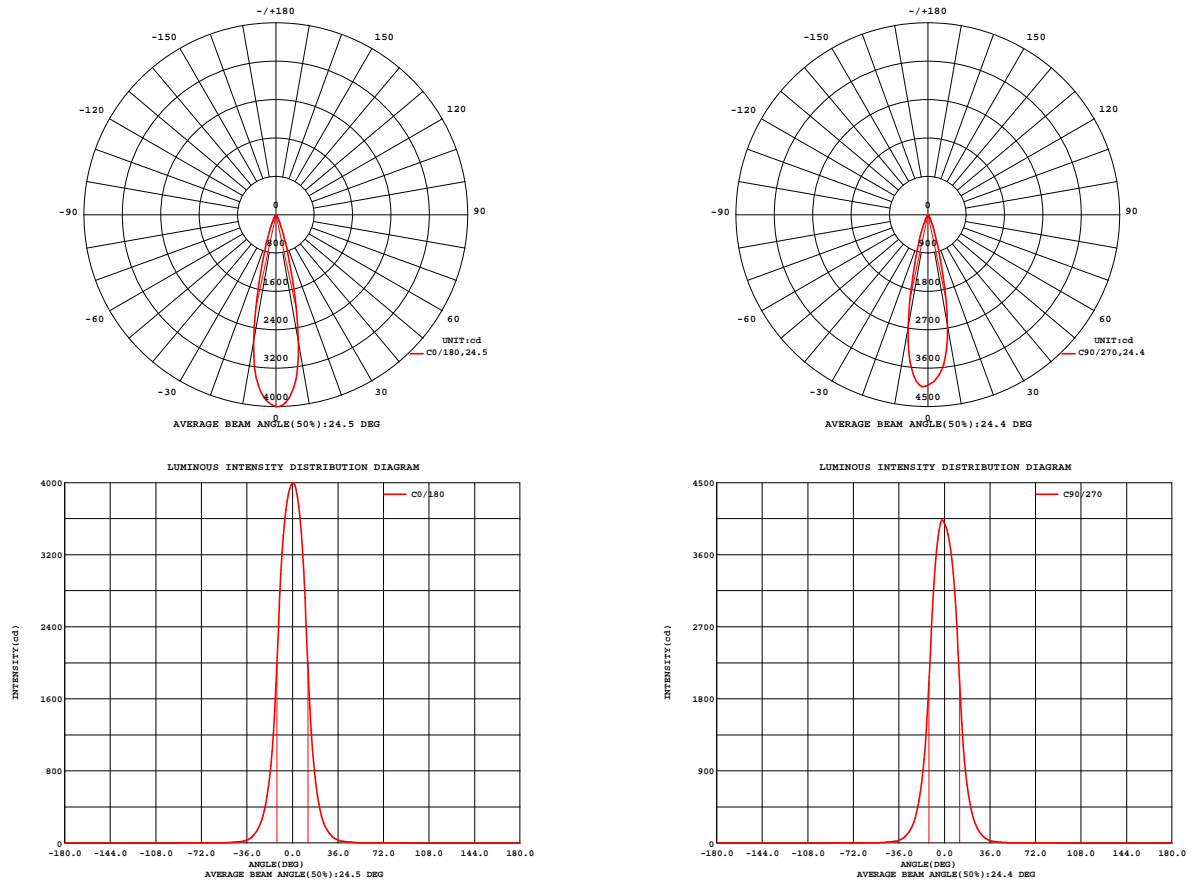


Fig. C0/C180

Fig. C90/C270

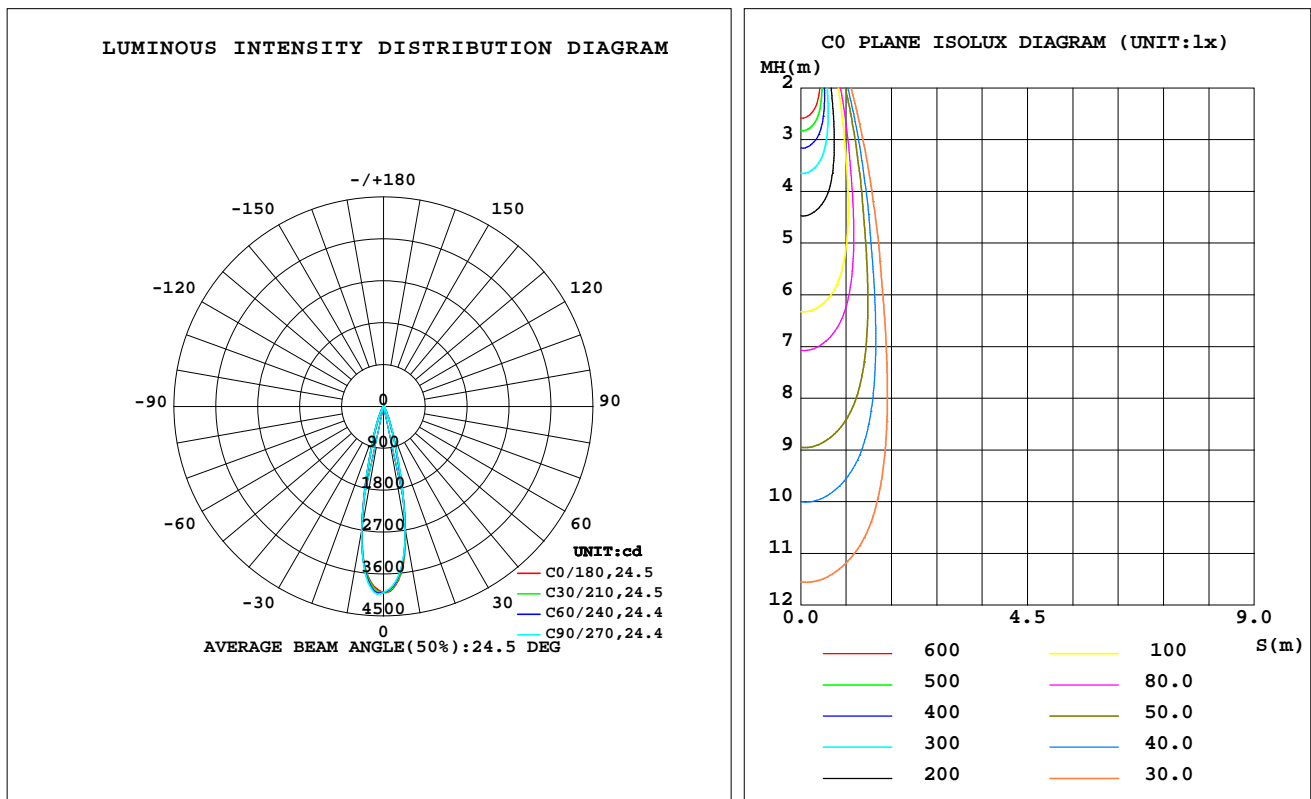
C Range: 0 - 360DEG  
C Interval: 30.0DEG  
Test Speed: HIGH  
Temperature: 25.3 °C  
Operators: zoe  
Test Date: 2024-5-23

$\gamma$  Range: 0 - 180DEG  
 $\gamma$  Interval: 1.0DEG  
Test System: EVERFINE GO-SPEX500\_V1 SYSTEM V2.00.461  
Humidity: 65.0%  
Test Distance: 3.160m [K=1.0000]  
Remarks: LAMP: BXRE-30G10TH-A-83 Ra: 90  
LENS: PM-1082-WH 15R  
NO DRIVER: 300mA  
30minutes warm-up

## LUMINAIRE PHOTOMETRIC TEST REPORT

Test:U:33.775V I:0.3000A P:10.133W PF:1.0000 Freq:0Hz Lamp Flux:1537.95x1 lm		
NAME: 2318.113-LEE-24-HE	TYPE:	WEIGHT:
SPEC.: 3000K	DIM.:	SERIAL No.: 2405230574
MFR.: RISE	SUR.: 0.000961625m2	Shielding Angle:

DATA OF LAMP		PHOTOMETRIC DATA Eff: 81.76 lm/W			
MODEL	Brideglux	I <sub>max</sub> (cd)	4033	S/MH(C0/180)	0.39
NOMINAL POWER(W)	10	LOR(%)	53.9	S/MH(C90/270)	0.39
RATED VOLTAGE(V)	34	TOTAL FLUX(lm)	828.44	η UP,DN(C0-180)	0.0,26.8
NOMINAL FLUX(lm)	1537.95	CIE CLASS	DIRECT	η UP,DN(C180-360)	0.0,27.0
LAMPS INSIDE	1	η up(%)	0.0	CIBSE SHR NOM	0.00
TEST VOLTAGE(V)	34	η down(%)	53.9	CIBSE SHR MAX	0.30



C Range: 0 - 360DEG  
C Interval: 30.0DEG  
Test Speed: HIGH  
Temperature:25.3℃  
Operators:zoe  
Test Date:2024-5-23

γ Range: 0 - 180DEG  
γ Interval: 1.0DEG  
Test System:EVERFINE GO-SPEX500\_V1 SYSTEM V2.00.461  
Humidity:65.0%  
Test Distance:3.160m [K=1.0000]  
Remarks: LAMP:BXRE-30G10TH-A-83 Ra:90  
LENS:PM-1082-WH 15R  
NO DRIVER:300mA  
30minutes warm-up

## ZONAL FLUX DIAGRAM

### ZONAL FLUX DIAGRAM:

$\gamma$	C0	C45	C90	C135	C180	C225	C270	C315	$\gamma$	$\Phi$ zone	$\Phi$ total	%lum,lamp
10	2719	2710	2677	2705	2697	2689	2703	2715	0- 10	323.9	323.9	39.1,21.1
20	518.1	522.1	523.2	521.8	519.1	522.8	529.4	523.7	10- 20	358.3	682.2	82.3,44.4
30	94.13	93.98	93.36	94.04	94.18	95.07	94.92	93.89	20- 30	109.5	791.7	95.6,51.5
40	18.11	16.94	16.81	17.07	17.29	17.66	18.01	18.30	30- 40	27.00	818.7	98.8,53.2
50	4.281	4.168	3.408	3.618	4.886	4.203	4.342	4.568	40- 50	7.649	826.3	99.7,53.7
60	0.7700	0.5969	0.5453	0.6128	0.8294	0.7409	0.6747	0.7068	50- 60	1.591	827.9	99.9,53.8
70	0.2234	0.1129	0.0930	0.1295	0.2612	0.2173	0.1985	0.2073	60- 70	0.3188	828.3	100,53.9
80	0.0900	0.0711	0.0800	0.0726	0.0962	0.0900	0.0968	0.0858	70- 80	0.1371	828.4	100,53.9
90	0	0	0	0	0	0	0	0	80- 90	0.0453	828.4	100,53.9
100	0	0	0	0	0	0	0	0	90-100	0	828.4	100,53.9
110	0	0	0	0	0	0	0	0	100-110	0	828.4	100,53.9
120	0	0	0	0	0	0	0	0	110-120	0	828.4	100,53.9
130	0	0	0	0	0	0	0	0	120-130	0	828.4	100,53.9
140	0	0	0	0	0	0	0	0	130-140	0	828.4	100,53.9
150	0	0	0	0	0	0	0	0	140-150	0	828.4	100,53.9
160	0	0	0	0	0	0	0	0	150-160	0	828.4	100,53.9
170	0	0	0	0	0	0	0	0	160-170	0	828.4	100,53.9
180	0	0	0	0	0	0	0	0	170-180	0	828.4	100,53.9
DEG	LUMINOUS INTENSITY:cd									UNIT:lm		

C Range: 0 - 360DEG  
C Interval: 30.0DEG  
Test Speed: HIGH  
Temperature:25.3℃  
Operators:zoe  
Test Date:2024-5-23

$\gamma$  Range: 0 - 180DEG  
 $\gamma$  Interval: 1.0DEG  
Test System:EVERFINE GO-SPEX500\_V1 SYSTEM V2.00.461  
Humidity:65.0%  
Test Distance:3.160m [K=1.0000]  
Remarks: LAMP:BXRE-30G10TH-A-83 Ra:90  
LENS:PM-1082-WH 15R  
NO DRIVER:300mA  
30minutes warm-up

### LUMINANCE LIMITATION CURVES

Test:U:33.775V I:0.3000A P:10.133W PF:1.0000 Freq:0Hz  
Lamp Flux:1537.95x1 lm

NAME: 2318.113-LEE-24-HE

TYPE:

WEIGHT:

SPEC.: 3000K

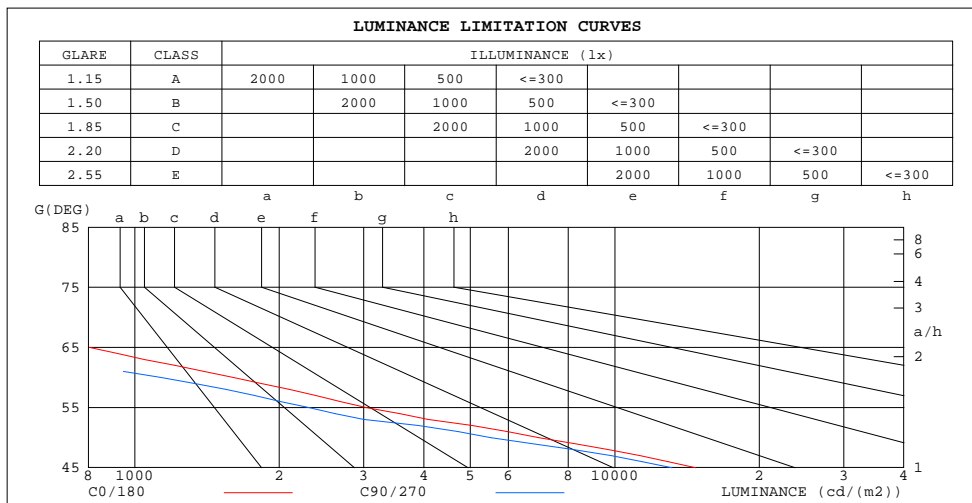
DIM.:

SERIAL No.: 2405230574

MFR.: RISE

SUR.: 0.000961625m2

Shielding Angle:



LUMINANCE cd/(m2)		
G(DEG)	C0/180	C90/270
85	622	587
80	540	479
75	627	359
70	680	283
65	804	385
60	1604	1134
55	3036	2306
50	6939	5513
45	14737	13143

C Range: 0 - 360DEG  
C Interval: 30.0DEG  
Test Speed: HIGH  
Temperature:25.3℃  
Operators:zoe  
Test Date:2024-5-23

γ Range: 0 - 180DEG  
γ Interval: 1.0DEG  
Test System:EVERFINE GO-SPEX500\_V1 SYSTEM V2.00.461  
Humidity:65.0%  
Test Distance:3.160m [K=1.0000]  
Remarks: LAMP:BXRE-30G10TH-A-83 Ra:90  
LENS:PM-1082-WH 15R  
NO DRIVER:300mA  
30minutes warm-up

## CU AND LUMINAIRE BUDGETARY ESTIMATE DIAGRAM

Test:U:33.775V I:0.3000A P:10.133W PF:1.0000 Freq:0Hz  
Lamp Flux:1537.95x1 lm

NAME: 2318.113-LEE-24-HE

TYPE:

WEIGHT:

SPEC.: 3000K

DIM.:

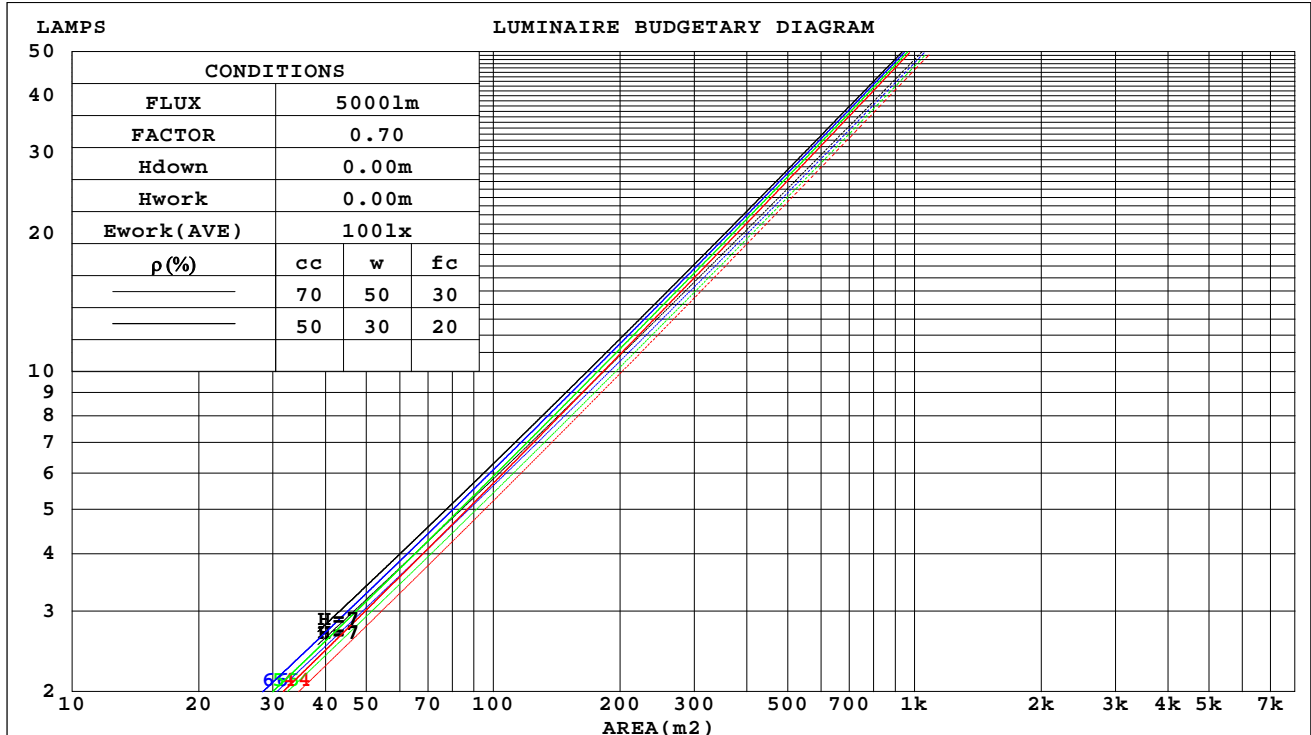
SERIAL No.: 2405230574

MFR.: RISE

SUR.: 0.000961625m2

Shielding Angle:

$\rho_{cc}$	80%			70%			50%			30%			10%			0
$\rho_w$	50%	30%	10%	50%	30%	10%	50%	30%	10%	50%	30%	10%	50%	30%	10%	0
$\rho_{fc}$	20%			20%			20%			20%			20%			0
RCR	RCR:Room Cavity Ratio			Coefficients of Utilization(CU)												
0.0	.64	.64	.64	.63	.63	.63	.60	.60	.60	.57	.57	.57	.55	.55	.55	.54
1.0	.61	.60	.59	.60	.59	.58	.58	.57	.56	.56	.55	.55	.54	.53	.53	.52
2.0	.58	.57	.55	.57	.56	.55	.56	.54	.54	.54	.53	.52	.53	.52	.51	.51
3.0	.56	.54	.52	.55	.53	.52	.54	.52	.51	.53	.51	.50	.51	.51	.50	.49
4.0	.54	.52	.50	.53	.51	.50	.52	.51	.49	.51	.50	.49	.50	.49	.48	.48
5.0	.52	.50	.48	.51	.49	.48	.51	.49	.48	.50	.48	.47	.49	.48	.47	.46
6.0	.50	.48	.47	.50	.48	.46	.49	.47	.46	.48	.47	.46	.48	.47	.46	.45
7.0	.49	.47	.45	.48	.46	.45	.48	.46	.45	.47	.46	.44	.47	.45	.44	.44
8.0	.47	.45	.44	.47	.45	.44	.47	.45	.43	.46	.44	.43	.46	.44	.43	.43
9.0	.46	.44	.42	.46	.44	.42	.45	.44	.42	.45	.43	.42	.45	.43	.42	.42
10.0	.45	.43	.41	.45	.43	.41	.44	.42	.41	.44	.42	.41	.44	.42	.41	.41



C Range: 0 - 360DEG  
C Interval: 30.0DEG  
Test Speed: HIGH  
Temperature:25.3℃  
Operators:zoe  
Test Date:2024-5-23

$\gamma$  Range: 0 - 180DEG  
 $\gamma$  Interval: 1.0DEG  
Test System:EVERFINE GO-SPEX500\_V1 SYSTEM V2.00.461  
Humidity:65.0%  
Test Distance:3.160m [K=1.0000]  
Remarks: LAMP:BXRE-30G10TH-A-83 Ra:90  
LENS:PM-1082-WH 15R  
NO DRIVER:300mA  
30minutes warm-up



## WEC AND CCEC

Test:U:33.775V I:0.3000A P:10.133W PF:1.0000 Freq:0Hz Lamp Flux:1537.95x1 lm		
NAME: 2318.113-LEE-24-HE	TYPE:	WEIGHT:
SPEC.: 3000K	DIM.:	SERIAL No.: 2405230574
MFR.: RISE	SUR.: 0.000961625m2	Shielding Angle:

pcc	80%			70%			50%			30%			10%			0
pw	50%	30%	10%	50%	30%	10%	50%	30%	10%	50%	30%	10%	50%	30%	10%	0
pf <sub>c</sub>	20%			20%			20%			20%			20%			0
RCR	RCR:Room Cavity Ratio						Wall Exitance Coefficients(WEC)									
0.0																
1.0	.072	.041	.013	.068	.039	.012	.061	.035	.011	.055	.032	.010	.050	.029	.009	
2.0	.066	.036	.011	.063	.035	.011	.058	.032	.010	.053	.030	.009	.048	.027	.009	
3.0	.062	.033	.010	.059	.032	.010	.055	.030	.009	.050	.028	.008	.047	.026	.008	
4.0	.058	.030	.009	.056	.029	.009	.052	.027	.008	.048	.026	.008	.045	.024	.007	
5.0	.054	.028	.008	.053	.027	.008	.049	.026	.008	.046	.024	.007	.043	.023	.007	
6.0	.051	.026	.007	.050	.025	.007	.047	.024	.007	.044	.023	.007	.042	.022	.007	
7.0	.049	.024	.007	.047	.024	.007	.045	.023	.007	.043	.022	.006	.041	.021	.006	
8.0	.046	.023	.006	.045	.022	.006	.043	.022	.006	.041	.021	.006	.039	.020	.006	
9.0	.044	.021	.006	.043	.021	.006	.041	.020	.006	.040	.020	.006	.038	.019	.006	
10.0	.042	.020	.006	.042	.020	.006	.040	.020	.006	.038	.019	.005	.037	.019	.005	

pcc	80%			70%			50%			30%			10%			0
pw	50%	30%	10%	50%	30%	10%	50%	30%	10%	50%	30%	10%	50%	30%	10%	0
pf <sub>c</sub>	20%			20%			20%			20%			20%			0
RCR	RCR:Room Cavity Ratio			Ceiling Cavity Exitance Coefficients(CCEC)												
0.0	.103	.103	.103	.088	.088	.088	.060	.060	.060	.034	.034	.034	.011	.011	.011	
1.0	.091	.085	.080	.077	.073	.069	.053	.050	.048	.031	.029	.028	.010	.009	.009	
2.0	.081	.071	.064	.069	.062	.055	.047	.043	.038	.027	.025	.023	.009	.008	.007	
3.0	.072	.061	.052	.062	.053	.045	.043	.037	.032	.025	.021	.019	.008	.007	.006	
4.0	.066	.053	.043	.056	.046	.037	.039	.032	.026	.022	.019	.015	.007	.006	.005	
5.0	.060	.046	.036	.051	.040	.031	.035	.028	.022	.021	.016	.013	.007	.005	.004	
6.0	.055	.041	.030	.047	.035	.026	.033	.025	.019	.019	.014	.011	.006	.005	.004	
7.0	.051	.036	.026	.044	.031	.023	.030	.022	.016	.018	.013	.010	.006	.004	.003	
8.0	.047	.032	.022	.041	.028	.019	.028	.020	.014	.016	.012	.008	.005	.004	.003	
9.0	.044	.029	.019	.038	.026	.017	.026	.018	.012	.015	.011	.007	.005	.003	.002	
10.0	.042	.027	.017	.036	.023	.015	.025	.016	.011	.015	.010	.006	.005	.003	.002	

C Range: 0 - 360DEG  
C Interval: 30.0DEG  
Test Speed: HIGH  
Temperature:25.3℃  
Operators:zoe  
Test Date:2024-5-23

γ Range: 0 - 180DEG  
γ Interval: 1.0DEG  
Test System:EVERFINE GO-SPEX500\_V1 SYSTEM V2.00.461  
Humidity:65.0%  
Test Distance:3.160m [K=1.0000]  
Remarks: LAMP:BXRE-30G10TH-A-83 Ra:90  
LENS:PM-1082-WH 15R  
NO DRIVER:300mA  
30minutes warm-up

## UGR(Unified Glare Rating) Table

Test:U:33.775V I:0.3000A P:10.133W PF:1.0000 Freq:0Hz Lamp Flux:1537.95x1 lm										
NAME: 2318.113-LEE-24-HE					TYPE:			WEIGHT:		
SPEC.: 3000K					DIM.:			SERIAL No.: 2405230574		
MFR.: RISE					SUR.: 0.000961625m2			Shielding Angle:		
ceiling/cavity	0.7	0.7	0.5	0.5	0.3	0.7	0.7	0.5	0.5	0.3
walls	0.5	0.3	0.5	0.3	0.3	0.5	0.3	0.5	0.3	0.3
working plane	0.2	0.2	0.2	0.2	0.2	0.2	0.2	0.2	0.2	0.2
Room dimensions	Viewed crosswise					Viewed endwise				
x = 2H y = 2H	9.7	10.3	9.9	10.5	10.6	9.4	10.1	9.6	10.2	10.4
3H	9.6	10.2	9.8	10.4	10.5	9.3	9.9	9.5	10.1	10.2
4H	9.5	10.1	9.8	10.3	10.5	9.2	9.8	9.5	10.0	10.2
6H	9.4	10.0	9.7	10.2	10.4	9.1	9.7	9.4	9.9	10.1
8H	9.4	9.9	9.7	10.1	10.4	9.1	9.6	9.4	9.8	10.1
12H	9.3	9.8	9.6	10.1	10.4	9.0	9.5	9.4	9.8	10.1
4H 2H	9.5	10.1	9.8	10.3	10.5	9.2	9.8	9.5	10.0	10.2
3H	9.3	9.8	9.6	10.1	10.4	9.1	9.5	9.4	9.8	10.1
4H	9.3	9.7	9.6	10.0	10.3	9.0	9.4	9.3	9.7	10.0
6H	9.2	9.6	9.5	9.9	10.2	8.9	9.3	9.2	9.6	9.9
8H	9.1	9.5	9.5	9.8	10.2	8.8	9.2	9.2	9.5	9.9
12H	9.0	9.4	9.5	9.8	10.1	8.8	9.1	9.2	9.5	9.8
8H 4H	9.1	9.5	9.5	9.8	10.2	8.8	9.2	9.2	9.5	9.9
6H	9.0	9.3	9.4	9.7	10.1	8.7	9.0	9.1	9.4	9.8
8H	8.9	9.2	9.4	9.6	10.1	8.6	8.9	9.1	9.3	9.8
12H	8.9	9.1	9.3	9.5	10.0	8.6	8.8	9.0	9.3	9.7
12H 4H	9.0	9.4	9.4	9.7	10.1	8.7	9.1	9.1	9.5	9.8
6H	8.9	9.2	9.4	9.6	10.1	8.6	8.9	9.1	9.3	9.8
8H	8.9	9.1	9.3	9.5	10.0	8.6	8.8	9.0	9.2	9.7
Variations with the observer position at spacings(CIE Pub.117):										
S = 1.0H	+ 3.3 / -10.3					+ 3.3 / -11.7				
1.5H	+ 5.0 / - 8.9					+ 5.1 / - 9.3				
2.0H	+ 6.5 / -10.1					+ 6.5 / -10.4				

CIE Pub.117, 1538 lm Total Lamp Luminous Flux Correct (8log(F/F0) = 1.5)  
Area: 0.000961625 m2

C Range: 0 - 360DEG  
C Interval: 30.0DEG  
Test Speed: HIGH  
Temperature:25.3℃  
Operators:zoe  
Test Date:2024-5-23

γ Range: 0 - 180DEG  
γ Interval: 1.0DEG  
Test System:EVERFINE GO-SPEX500\_V1 SYSTEM V2.00.461  
Humidity:65.0%  
Test Distance:3.160m [K=1.0000]  
Remarks: LAMP:BXRE-30G10TH-A-83 Ra:90  
LENS:PM-1082-WH 15R  
NO DRIVER:300mA  
30minutes warm-up



### UTILIZATION FACTORS TABLE

Test:U:33.775V I:0.3000A P:10.133W PF:1.0000 Freq:0Hz Lamp Flux:1537.95x1 lm		
NAME: 2318.113-LEE-24-HE	TYPE:	WEIGHT:
SPEC.: 3000K	DIM.:	SERIAL No.: 2405230574
MFR.: RISE	SUR.: 0.000961625m2	Shielding Angle:

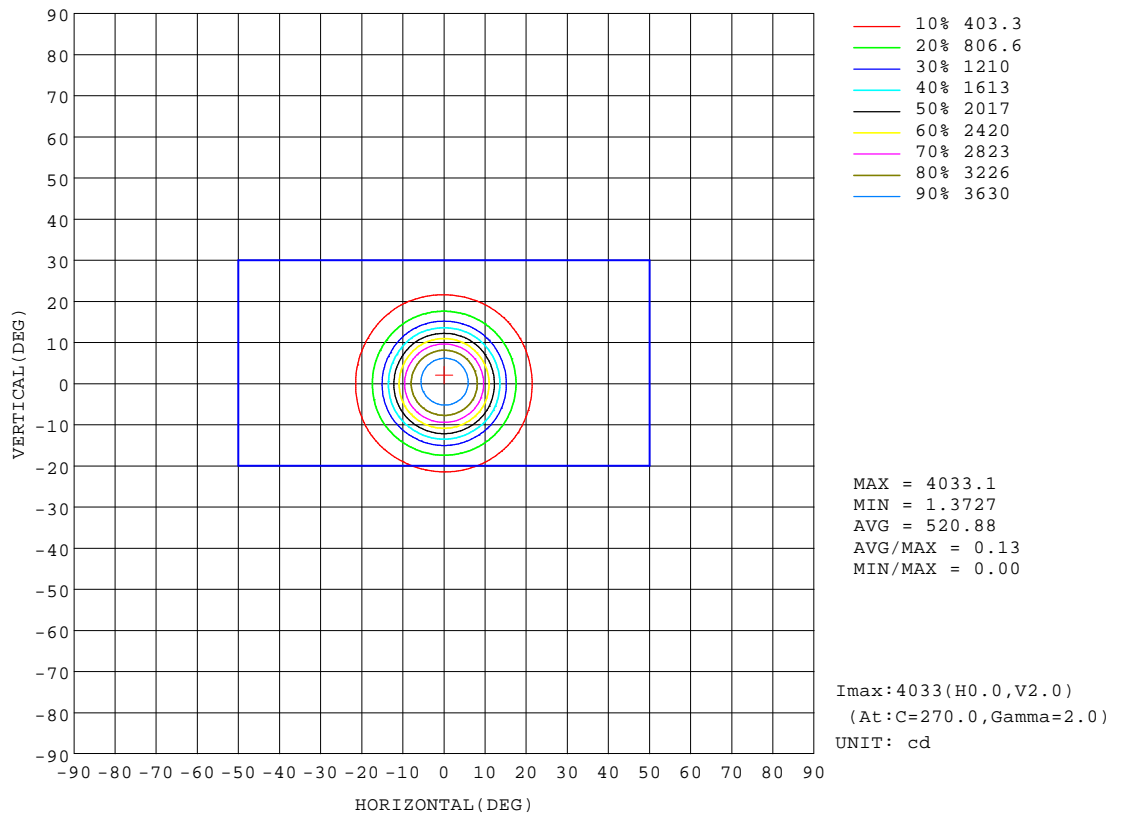
REFLECTANCE										
Ceiling	0.8	0.8	0.8	0.7	0.7	0.7	0.5	0.5	0.5	0
Walls	0.7	0.5	0.3	0.7	0.5	0.3	0.7	0.5	0.3	0
Working plane	0.2	0.2	0.2	0.2	0.2	0.2	0.2	0.2	0.2	0
ROOM INDEX	UTILIZATION FACTORS(PERCENT) $k(RI) \times RCR = 5$									
k = 0.60	49	46	44	49	46	44	48	46	44	42
0.80	53	50	48	52	50	48	52	49	48	46
1.00	55	52	50	54	52	50	53	52	50	48
1.25	57	54	52	56	54	52	55	53	52	50
1.50	58	56	54	57	55	54	56	55	53	51
2.00	59	57	56	58	57	55	57	56	54	52
2.50	60	58	57	59	57	56	57	56	55	52
3.00	61	59	58	60	58	57	58	57	56	53
4.00	62	60	59	61	59	59	59	58	57	53
5.00	62	61	60	61	60	59	59	58	58	54
ROOM INDEX	UF(total)									Direct
According to DIN EN 13032-2 2004			Suspended					SHRNOM = 1.25		

C Range: 0 - 360DEG  
C Interval: 30.0DEG  
Test Speed: HIGH  
Temperature:25.3℃  
Operators:zoe  
Test Date:2024-5-23

γ Range: 0 - 180DEG  
γ Interval: 1.0DEG  
Test System:EVERFINE GO-SPEX500\_V1 SYSTEM V2.00.461  
Humidity:65.0%  
Test Distance:3.160m [K=1.0000]  
Remarks: LAMP:BXRE-30G10TH-A-83 Ra:90  
LENS:PM-1082-WH 15R  
NO DRIVER:300mA  
30minutes warm-up

## ISOCANDELA DIAGRAM

Test:U:33.775V I:0.3000A P:10.133W PF:1.0000 Freq:0Hz Lamp Flux:1537.95x1 lm		
NAME: 2318.113-LEE-24-HE	TYPE:	WEIGHT:
SPEC.: 3000K	DIM.:	SERIAL No.: 2405230574
MFR.: RISE	SUR.: 0.000961625m2	Shielding Angle:

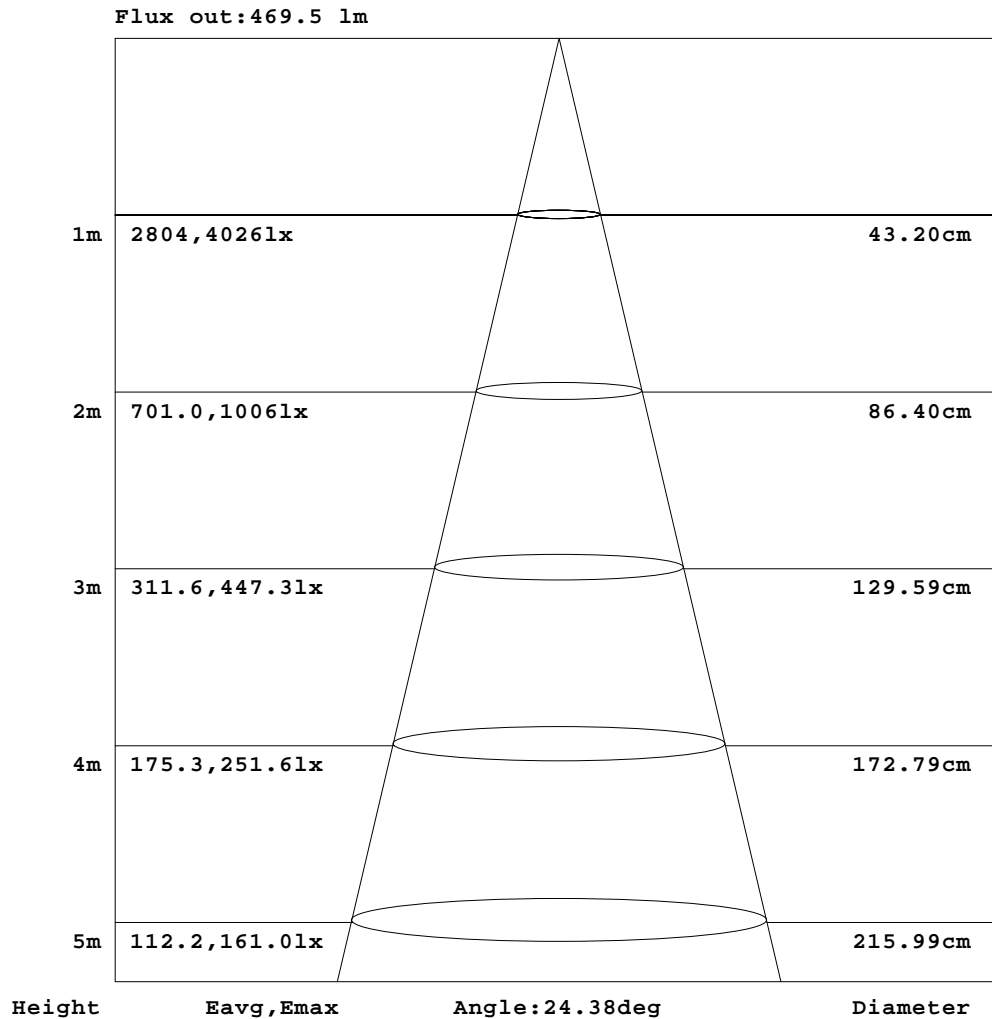


C Range: 0 - 360DEG  
C Interval: 30.0DEG  
Test Speed: HIGH  
Temperature: 25.3 °C  
Operators: zoe  
Test Date: 2024-5-23

γ Range: 0 - 180DEG  
γ Interval: 1.0DEG  
Test System: EVERFINE GO-SPEX500\_V1 SYSTEM V2.00.461  
Humidity: 65.0%  
Test Distance: 3.160m [K=1.0000]  
Remarks: LAMP: BXRE-30G10TH-A-83 Ra: 90  
LENS: PM-1082-WH 15R  
NO DRIVER: 300mA  
30minutes warm-up

## AAI Figure

Test:U:33.775V I:0.3000A P:10.133W PF:1.0000 Freq:0Hz Lamp Flux:1537.95x1 lm		
NAME: 2318.113-LEE-24-HE	TYPE:	WEIGHT:
SPEC.: 3000K	DIM.:	SERIAL No.: 2405230574
MFR.: RISE	SUR.: 0.000961625m2	Shielding Angle:



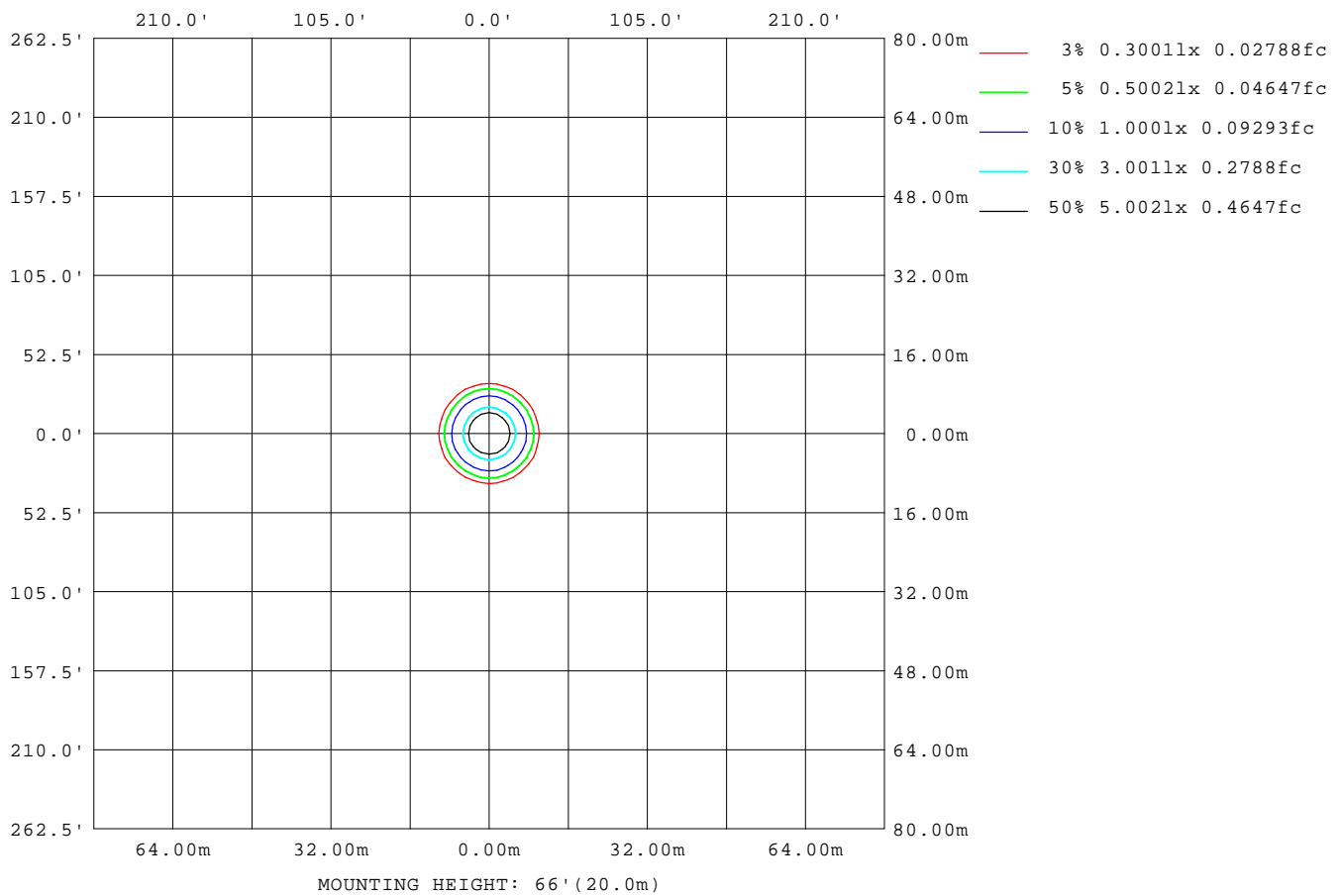
Note:The Curves indicate the illuminated area and the average illumination when the luminaire is at different distance.

C Range: 0 - 360DEG  
C Interval: 30.0DEG  
Test Speed: HIGH  
Temperature:25.3℃  
Operators:zoe  
Test Date:2024-5-23

γ Range: 0 - 180DEG  
γ Interval: 1.0DEG  
Test System:EVERFINE GO-SPEX500\_V1 SYSTEM V2.00.461  
Humidity:65.0%  
Test Distance:3.160m [K=1.0000]  
Remarks: LAMP:BXRE-30G10TH-A-83 Ra:90  
LENS:PM-1082-WH 15R  
NO DRIVER:300mA  
30minutes warm-up

## ISOLUX DIAGRAM

Test:U:33.775V I:0.3000A P:10.133W PF:1.0000 Freq:0Hz Lamp Flux:1537.95x1 lm		
NAME: 2318.113-LEE-24-HE	TYPE:	WEIGHT:
SPEC.: 3000K	DIM.:	SERIAL No.: 2405230574
MFR.: RISE	SUR.: 0.000961625m2	Shielding Angle:



C Range: 0 - 360DEG  
C Interval: 30.0DEG  
Test Speed: HIGH  
Temperature:25.3℃  
Operators:zoe  
Test Date:2024-5-23

γ Range: 0 - 180DEG  
γ Interval: 1.0DEG  
Test System:EVERFINE GO-SPEX500\_V1 SYSTEM V2.00.461  
Humidity:65.0%  
Test Distance:3.160m [K=1.0000]  
Remarks: LAMP:BXRE-30G10TH-A-83 Ra:90  
LENS:PM-1082-WH 15R  
NO DRIVER:300mA  
30minutes warm-up

### LED Avg.L Report

Test:U:33.775V I:0.3000A P:10.133W PF:1.0000 Freq:0Hz Lamp Flux:1537.95x1 lm		
NAME: 2318.113-LEE-24-HE	TYPE:	WEIGHT:
SPEC.: 3000K	DIM.:	SERIAL No.: 2405230574
MFR.: RISE	SUR.: 0.000961625m2	Shielding Angle:

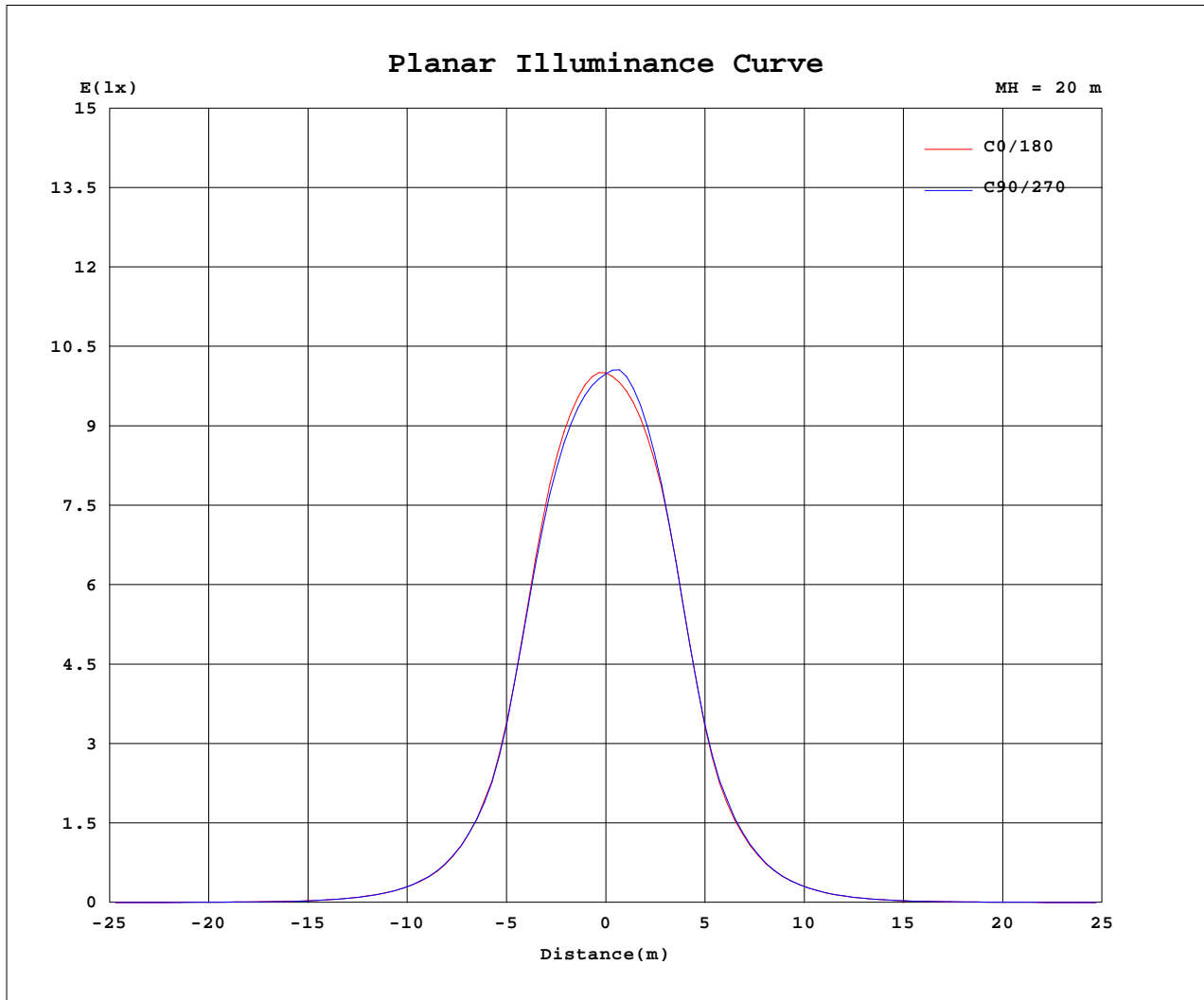
AvgL	cd/m2
L_0~180(65)av	877
L_0~180(75)av	662
L_0~180(85)av	609
L_90~270(65)av	539
L_90~270(75)av	482
L_90~270(85)av	642
L_45(65)av	630
L_45(75)av	487
L_45(85)av	462

Standard: GB/T 29293-2012

C Range: 0 - 360DEG  
C Interval: 30.0DEG  
Test Speed: HIGH  
Temperature:25.3℃  
Operators:zoe  
Test Date:2024-5-23

γ Range: 0 - 180DEG  
γ Interval: 1.0DEG  
Test System:EVERFINE GO-SPEX500\_V1 SYSTEM V2.00.461  
Humidity:65.0%  
Test Distance:3.160m [K=1.0000]  
Remarks: LAMP:BXRE-30G10TH-A-83 Ra:90  
LENS:PM-1082-WH 15R  
NO DRIVER:300mA  
30minutes warm-up

## Planar Illuminance Curve



C Range: 0 - 360DEG  
 C Interval: 30.0DEG  
 Test Speed: HIGH  
 Temperature: 25.3 °C  
 Operators: zoe  
 Test Date: 2024-5-23

γ Range: 0 - 180DEG  
 γ Interval: 1.0DEG  
 Test System: EVERFINE GO-SPEX500\_V1 SYSTEM V2.00.461  
 Humidity: 65.0%  
 Test Distance: 3.160m [K=1.0000]  
 Remarks: LAMP: BXRE-30G10TH-A-83 Ra: 90  
 LENS: PM-1082-WH 15R  
 NO DRIVER: 300mA  
 30minutes warm-up



## LUMINOUS DISTRIBUTION INTENSITY DATA

Test:U:33.775V I:0.3000A P:10.133W PF:1.0000 Freq:0Hz Lamp Flux:1537.95x1 lm		
NAME: 2318.113-LEE-24-HE	TYPE:	WEIGHT:
SPEC.: 3000K	DIM.:	SERIAL No.: 2405230574
MFR.: RISE	SUR.: 0.000961625m2	Shielding Angle:

Table--1

UNIT: cd

C(DEG) γ (DEG)	0	30	60	90	120	150	180	210	240	270	300	330						
0	3994	3994	3994	3994	3994	3994	3994	3994	3994	3994	3994	3994						
5	3739	3712	3680	3660	3660	3682	3698	3724	3768	3801	3814	3774						
10	2719	2725	2694	2677	2689	2721	2697	2677	2701	2703	2721	2709						
15	1243	1251	1220	1227	1214	1238	1215	1202	1241	1238	1250	1238						
20	518	522	522	523	513	531	519	512	534	529	528	520						
25	216	223	219	222	215	223	223	219	226	220	222	214						
30	94.1	94.6	93.4	93.4	92.1	96.0	94.2	93.3	96.9	94.9	94.1	93.7						
35	39.7	39.2	37.9	38.2	37.9	39.5	38.6	38.6	40.0	40.1	39.9	40.0						
40	18.1	17.2	16.7	16.8	16.7	17.4	17.3	17.2	18.1	18.0	18.2	18.4						
45	10.0	9.70	9.14	8.94	8.65	9.61	9.67	9.87	9.93	10.1	9.80	10.3						
50	4.28	4.01	4.33	3.41	3.28	3.96	4.89	4.19	4.21	4.34	4.72	4.42						
55	1.67	1.50	1.31	1.27	1.26	1.45	1.67	1.62	1.60	1.52	1.50	1.63						
60	0.77	0.63	0.56	0.55	0.55	0.68	0.83	0.76	0.72	0.67	0.66	0.75						
65	0.33	0.22	0.17	0.16	0.17	0.26	0.39	0.35	0.30	0.28	0.28	0.33						
70	0.22	0.13	0.10	0.09	0.10	0.16	0.26	0.23	0.20	0.20	0.19	0.22						
75	0.16	0.10	0.09	0.09	0.08	0.11	0.17	0.16	0.15	0.15	0.14	0.15						
80	0.09	0.07	0.07	0.08	0.07	0.08	0.10	0.09	0.09	0.10	0.09	0.09						
85	0.05	0.04	0.03	0.05	0.04	0.04	0.05	0.04	0.05	0.06	0.04	0.04						
90	0.00	0.00	0.00	0.00	0.00	0.00	0.00	0.00	0.00	0.00	0.00	0.00						
95	0.00	0.00	0.00	0.00	0.00	0.00	0.00	0.00	0.00	0.00	0.00	0.00						
100	0.00	0.00	0.00	0.00	0.00	0.00	0.00	0.00	0.00	0.00	0.00	0.00						
105	0.00	0.00	0.00	0.00	0.00	0.00	0.00	0.00	0.00	0.00	0.00	0.00						
110	0.00	0.00	0.00	0.00	0.00	0.00	0.00	0.00	0.00	0.00	0.00	0.00						
115	0.00	0.00	0.00	0.00	0.00	0.00	0.00	0.00	0.00	0.00	0.00	0.00						
120	0.00	0.00	0.00	0.00	0.00	0.00	0.00	0.00	0.00	0.00	0.00	0.00						
125	0.00	0.00	0.00	0.00	0.00	0.00	0.00	0.00	0.00	0.00	0.00	0.00						
130	0.00	0.00	0.00	0.00	0.00	0.00	0.00	0.00	0.00	0.00	0.00	0.00						
135	0.00	0.00	0.00	0.00	0.00	0.00	0.00	0.00	0.00	0.00	0.00	0.00						
140	0.00	0.00	0.00	0.00	0.00	0.00	0.00	0.00	0.00	0.00	0.00	0.00						
145	0.00	0.00	0.00	0.00	0.00	0.00	0.00	0.00	0.00	0.00	0.00	0.00						
150	0.00	0.00	0.00	0.00	0.00	0.00	0.00	0.00	0.00	0.00	0.00	0.00						
155	0.00	0.00	0.00	0.00	0.00	0.00	0.00	0.00	0.00	0.00	0.00	0.00						
160	0.00	0.00	0.00	0.00	0.00	0.00	0.00	0.00	0.00	0.00	0.00	0.00						
165	0.00	0.00	0.00	0.00	0.00	0.00	0.00	0.00	0.00	0.00	0.00	0.00						
170	0.00	0.00	0.00	0.00	0.00	0.00	0.00	0.00	0.00	0.00	0.00	0.00						
175	0.00	0.00	0.00	0.00	0.00	0.00	0.00	0.00	0.00	0.00	0.00	0.00						
180	0.00	0.00	0.00	0.00	0.00	0.00	0.00	0.00	0.00	0.00	0.00	0.00						

C Range: 0 - 360DEG  
C Interval: 30.0DEG  
Test Speed: HIGH  
Temperature:25.3℃  
Operators:zoe  
Test Date:2024-5-23

γ Range: 0 - 180DEG  
γ Interval: 1.0DEG  
Test System:EVERFINE GO-SPEX500\_V1 SYSTEM V2.00.461  
Humidity:65.0%  
Test Distance:3.160m [K=1.0000]  
Remarks: LAMP:BXRE-30G10TH-A-83 Ra:90  
LENS:PM-1082-WH 15R  
NO DRIVER:300mA  
30minutes warm-up